

LD234-24V

Compact Surface Mounted Window Reveal Light



Install sheet - Page 1

SPECIFICATION

LED surfaced mounted luminaires are class III for Safety Extra Low Voltage **DC** supply. The product should only be used with a supplied or LightGraphix approved **24 DC** constant voltage driver.

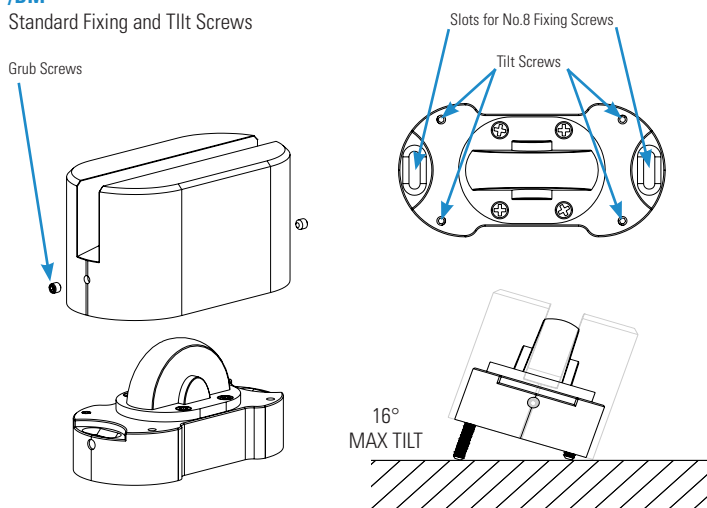
Suitable for mounting on normally flammable surfaces.

Lamp: **E3 LED Engine.**
This fitting is **IP65** rated.
Lumen Maintenance: L90B5 at 90,000hrs.

LD234 - E3			
Product & LED Output Code	Power Output	Max Ambient	Energy Class
LD234-E3-5	5W	-20° to 35°	D
LD234-E3-7	7W	-20° to 35°	E
LD234-E3-10	10W	-20° to 35°	E

DIAGRAM

/DM
Standard Fixing and Tilt Screws



INSTALLATION

/DM

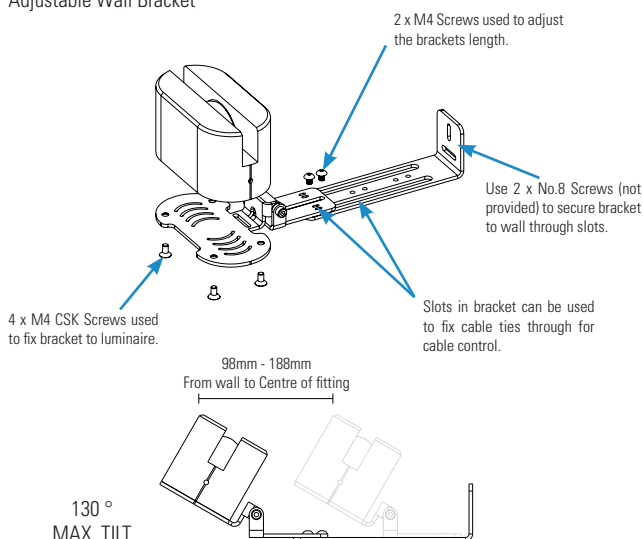
1. Loosen grub screws using a 2mm Allen Key and detach the cover from the LD234.
2. Position the luminaire and use the countersunk slots to drill pilot holes for fixing screws.
3. Wire luminaire to a specified driver.

NOTE: Connections in wet environments. Make IP68 connection to stop water travelling up the cables into the fittings! Refer to IP connection sheet for further details.

4. Confirm the luminaire is wired correctly by powering up the fitting. If there is no light output, switch off power immediately and verify wiring. For more effective results, turn the luminaire on while adjusting to desired lit effect.
5. Use the same 2mm Allen Key to adjust the tilt screws located on the 4 corners of the body to angle the luminaire to the desired effect.
6. Using No.8 CSK Screws, secure your luminaire to the desired fixing surface.
7. Reattach the case using the grub screws loosened in 'Step 1'.

/AWB-ADJ

Adjustable Wall Bracket



/AWB

1. Attach the luminaire to the Adjustable Bracket using the 4 x M4 CSK screws (Phillips) provided.
2. Use a 2.5mm Allen Key to loosen the 2 x M4 Button Screws provided and adjust the length of the bracket.
3. Using 2 x No.8 Screws (not provided), secure your bracket to the desired fixing surface.
4. Wire luminaire to a specified driver. The slots and holes in the bracket arms can be used to secure cable using cable ties.

NOTE: Connections in wet environments. Make IP68 connection to stop water travelling up the cables into the fittings! Refer to IP connection sheet for further details.

5. Make tilt adjustments by hand.
6. Confirm installation was successful by powering up the fitting. If there is no light output, switch off power immediately and verify wiring.

**TENSION HAS BEEN PRE-SET ON TILT ADJUSTMENT.
HOWEVER, PLEASE TIGHTEN IF INSTALLATION REQUIRES.**

LD234-24V

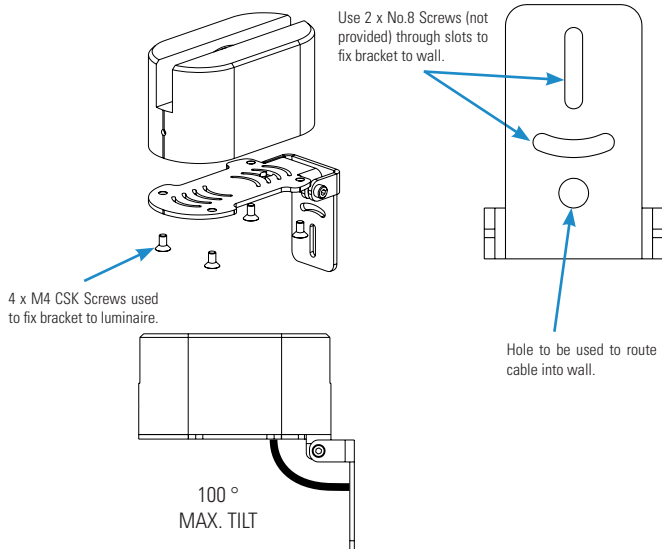
Compact Surface Mounted Window Reveal Light

Install sheet - Page 2

DIAGRAM

/ACM

Adjustable Corner Mount



INSTALLATION

/ACM

1. Attach the luminaire to the Corner Mount Bracket using the 4 x M4 CSK screws (Phillips) provided.
2. Using 2 x No.8 Screws (not provided), secure your bracket to the desired fixing surface.
3. Wire luminaire to a specified driver. Cable can be routed through the Base and Wall Bracket for tidy cable management.

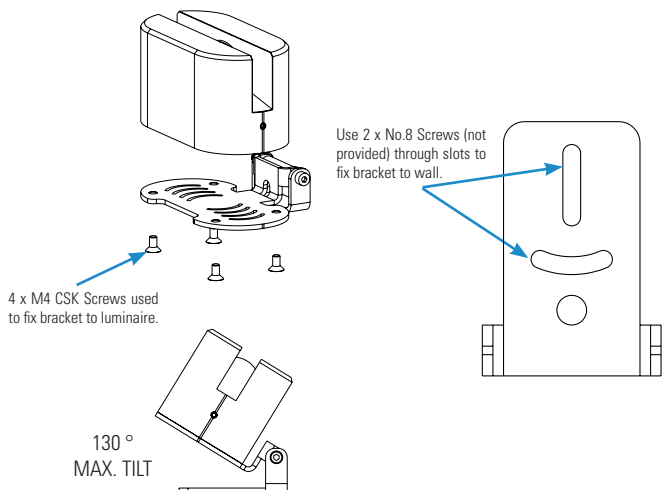
NOTE: Connections in wet environments. Make IP68 connection to stop water travelling up the cables into the fittings! Refer to IP connection sheet for further details.

4. Make tilt adjustments by hand.
5. Confirm installation was successful by powering up the fitting. If there is no light output, switch off power immediately and verify wiring.

**TENSION HAS BEEN PRE-SET ON TILT ADJUSTMENT.
HOWEVER, PLEASE TIGHTEN IF INSTALLATION REQUIRES.**

/ABM

Adjustable Bracket Mount



/ABM

1. Attach the luminaire to the Adjustable Bracket using the 4 x M4 CSK screws (Phillips) provided.
2. Align the luminaire in the correct location and fix the bracket to the surface using No.8 screws (not provided).
3. Wire luminaire to a specified driver.

NOTE: Connections in wet environments. Make IP68 connection to stop water travelling up the cables into the fittings! Refer to IP connection sheet for further details.

5. Make tilt adjustments by hand.
6. Confirm installation was successful by powering up the fitting. If there is no light output, switch off power immediately and verify wiring.

**TENSION HAS BEEN PRE-SET ON TILT ADJUSTMENT.
HOWEVER, PLEASE TIGHTEN IF INSTALLATION REQUIRES.**

SEE CONSTANT VOLTAGE WIRING SHEET FOR IN PARALLEL WIRING DIAGRAM

Do not power up until fitting is wired correctly! Constant voltage LEDs must be wired in parallel, polarity is critical. Please refer to specified driver sheet for details on the minimum and maximum number of LEDs per circuit.

CORE COLOUR & POLARITY		
Colour of Cable	Red	Black
Polarity	+	-

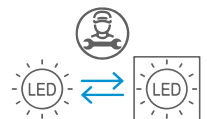
IMPORTANT

Make sure that all cables and connections are securely connected before switching on the power. Failing to do this can lead to failure of the LEDs and/or the driver. If the LEDs do not work upon power up, turn off the power source immediately and check the polarity of the wiring. To reduce the risk of strangulation the flexible wiring connected to this luminaire shall be effectively fixed to the wall if the wiring is within arm's reach. Any attempt made to open up and/or modify the luminaire will invalidate the manufacturers warranty. This is inclusive of but not limited to removal of the LightGraphix product label or removal of any parts from the main body of the product including bezels, electrical components and factory fitted fixing methods (unless otherwise stated in these instructions). Luminaire should be wired no further than 30 meters away from a SELV constant current LED driver (based on a 1mm squared cross sectional cable). Forward voltage of luminaire is 24VDC, if wired in series UOOUT of LED driver and luminaire circuit should not exceed 60VDC. Terminal block not included. Installation must be performed by a qualified person. For connections made in dry environments 2 x Wago 221-2411 or connections with similar specifications are recommended. For damp or wet environments a connector of the same electrical specification but with a suitable IP rating should be used.

LightGraphix reserve the right to change specifications without notice. This leaflet should be issued and retained by the end user.

END OF LIFE

This fitting contains a replaceable (LED only) light source, that must be replaced by a professional. If the product has come to the end of its life or is in need of repair please contact LightGraphix or your preferred recycling scheme.



MAINTENANCE

Clean with soft damp cloth
LED: Please contact LightGraphix

CONNECTION

- Wire Connection Method: Clamp
- No. of Positions: 1Way
- Rated Voltage: 450V
- Rated Current: 32A
- Wire Size (stranded): 18 - 14AWG

Factory Address: LightGraphix, 20 Bourne Road Ind. Park, Crayford, Kent, DA1 4BZ